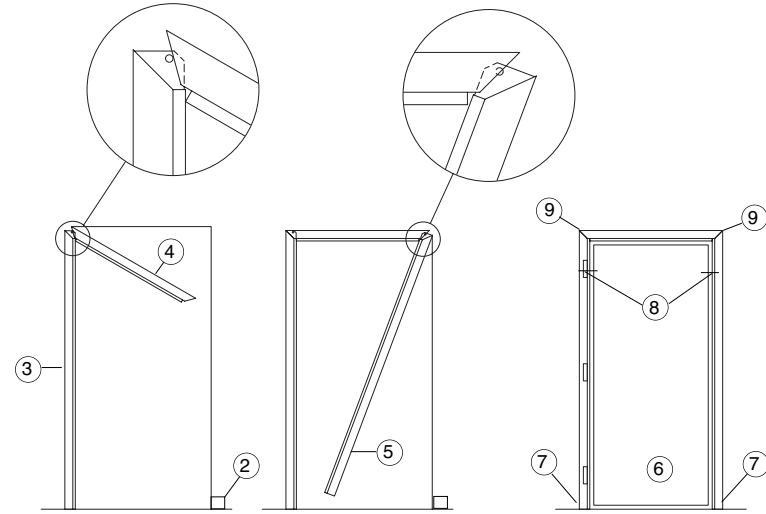
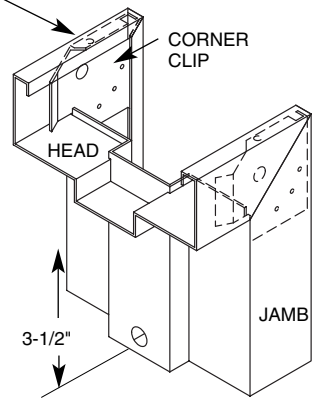
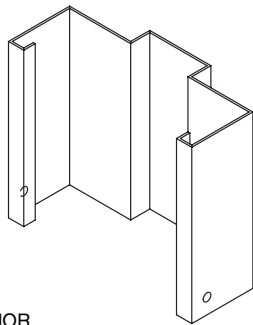


KD DRYWALL FRAME INSTALLATION INSTRUCTIONS

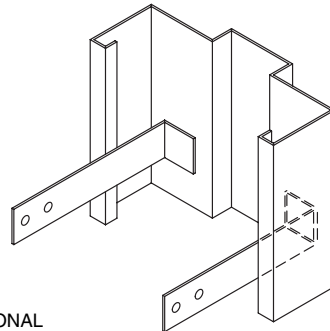
CORNER SCREW
#8 PAN HEAD
(OPTIONAL ON
NON-LABEL
FRAMES



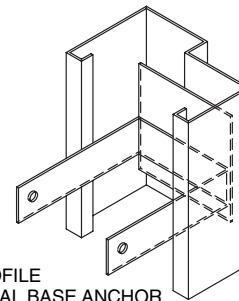
- Construct wall with rough opening height equal to finished opening height plus 3/4" to 1" max. Rough opening width is as follows:
 - For 2" face frames – opening width plus 2-1/8" to 2-3/8"
 - For 1-3/4" and 1-1/2" face frames – opening width plus 2"
 - For "CG" profiles, 3" jamb depth 1-9/16" rabbet and 3", 3-1/8", 3-1/4" and 3-3/8" jamb depth 1-15/16" rabbet frames - opening width plus 2-13/16", all other "CG" profile frames - opening width plus 2-1/8" to 2-3/8"
- If wrap-around base anchor is used, notch drywall in that area.
- Retract compression bars in the jambs and install one jamb in position on wall.
- Insert frame head under the corner clips of the jamb and raise into position.
- Insert the corner clips of the remaining jamb into the opposite end of the head and position jamb on wall.
- Locate a removable frame spacing bar at base of centered frame to maintain proper opening width during installation.
- Square and plumb frame and install base anchor screws through countersink holes in frame face and into floor plate.
- Square top of frame and tighten compression bars by turning screws counter clockwise. (Do not overtighten)
- Install (4) No. 8 x 1/2 sheet metal screws at the corners of the head to attach head to jambs. (Required for U.L. rated frames)



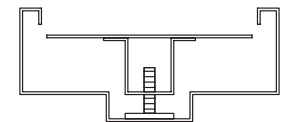
STANDARD
BASE ANCHOR



OPTIONAL
BASE ANCHOR



CG PROFILE
OPTIONAL BASE ANCHOR



COMPRESSION BAR ANCHOR